

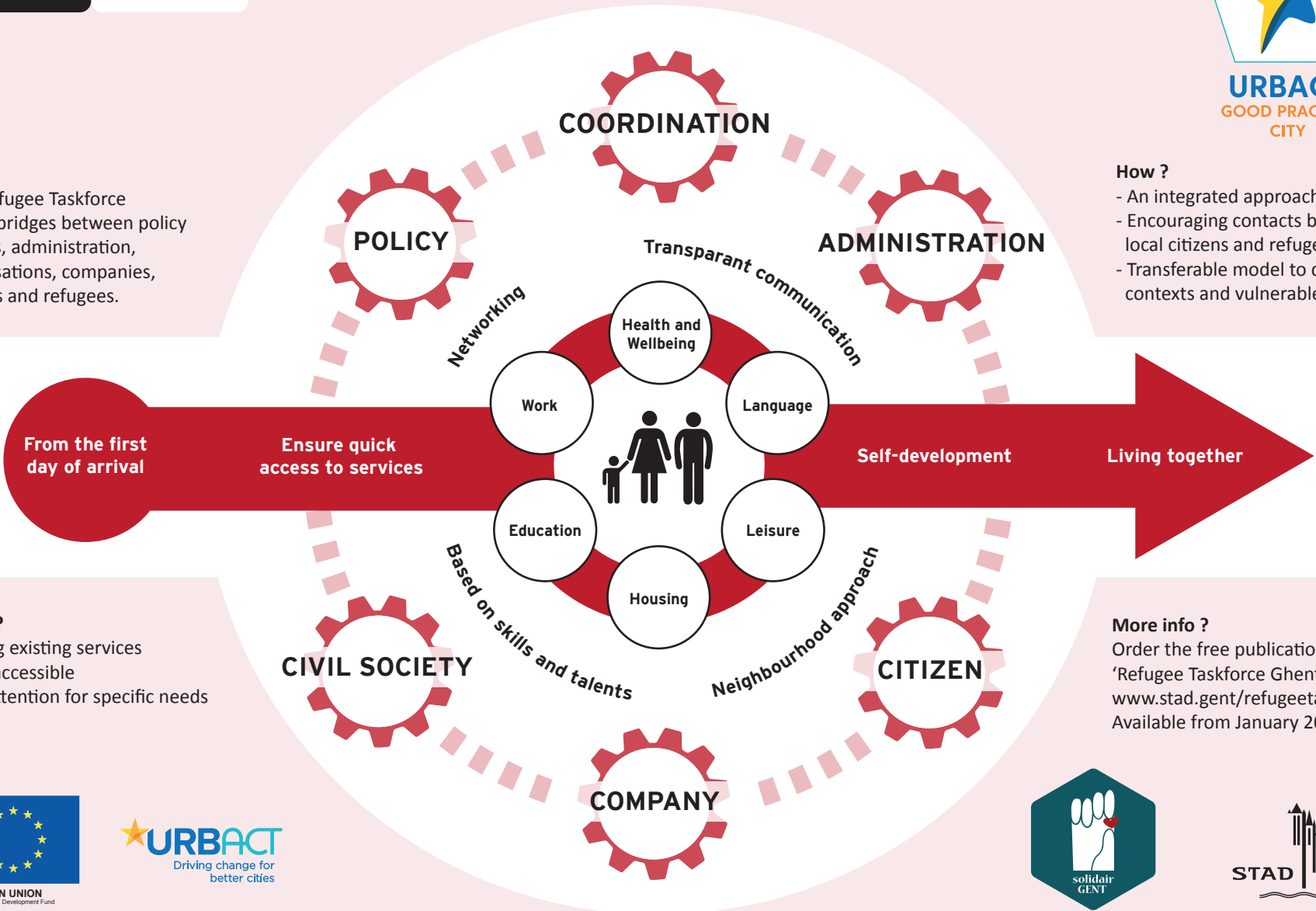
REFUGEE TASKFORCE

From a proactive approach to a sustainable cooperation model



Who ?
The Refugee Taskforce builds bridges between policy makers, administration, organisations, companies, citizens and refugees.

How ?
- An integrated approach
- Encouraging contacts between local citizens and refugees
- Transferable model to different contexts and vulnerable groups



What ?
Making existing services more accessible with attention for specific needs

More info ?
Order the free publication 'Refugee Taskforce Ghent' on www.stad.gent/refugeetaskforce
Available from January 2018.

