



PROSPERA
Interreg Europe



European Union
European Regional
Development Fund

Good practice 1. Urban strategies for planning and regeneration

Matilde Bianchi

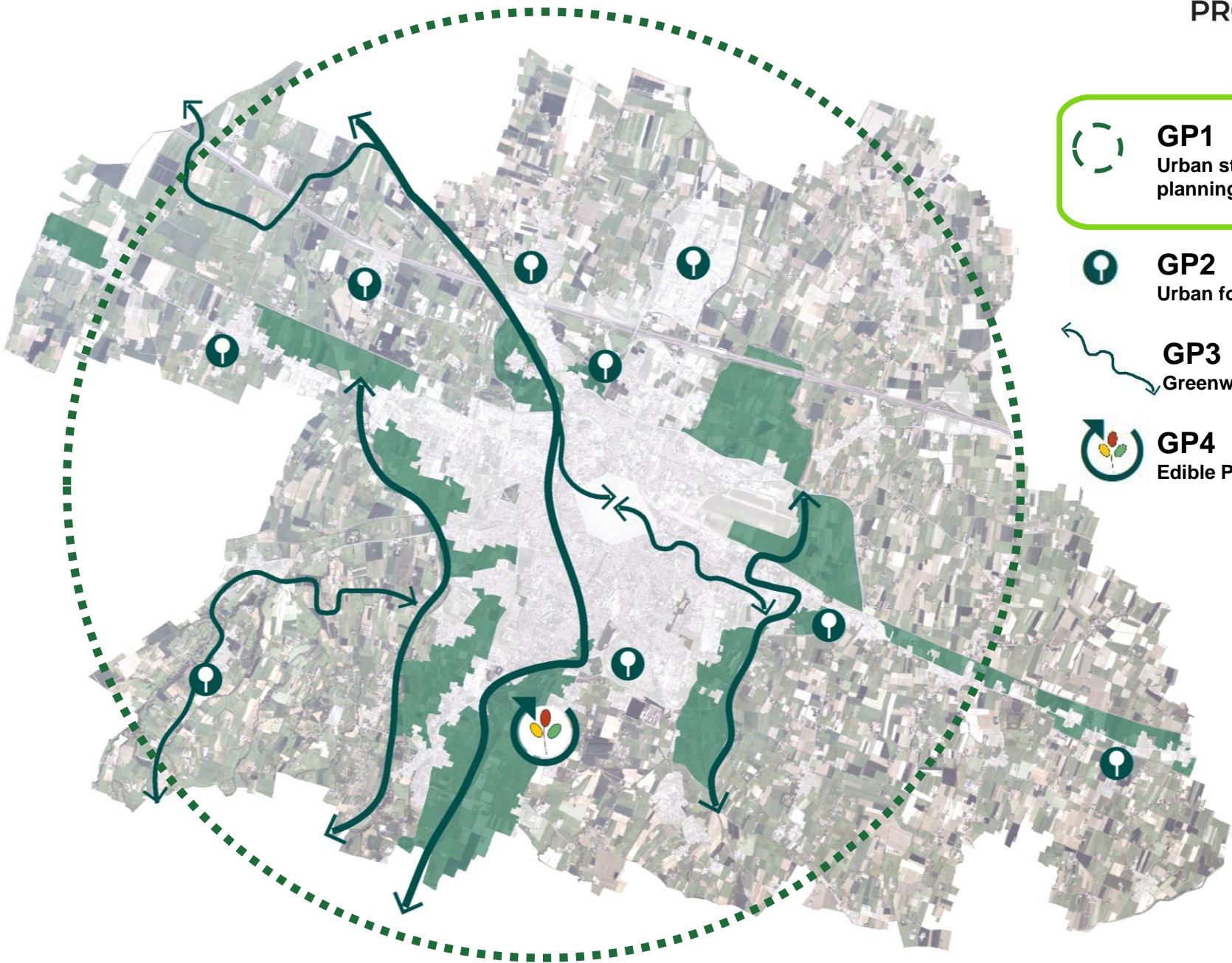
Urban Regeneration Department of the Municipality of Reggio Emilia


matilde.bianchi@comune.re.it



3 Marzo 2021

Online Field Visit Reggio Emilia, Italy



 **GP1**
Urban strategies for
planning and regeneration

 **GP2**
Urban forestation plan

 **GP3**
Greenways

 **GP4**
Edible Park

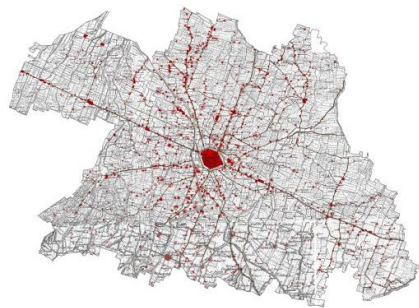
1 VARIATION
to REDUCTION
OF SOIL
CONSUMPTION

2 VARIATION
to PROMOTE
RURAL TERRITORY

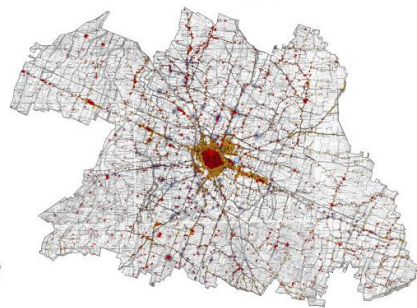


3 NEW PLANNING SEASON
and GENERAL URBAN PLAN (PUG)

Dynamics of the territory > Historical evolution Urban Area



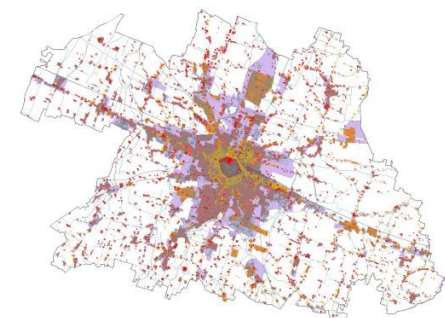
1880



1936



1985



2006

Dynamics of the construction sector



The sector is mainly vocused to **recover the exsiting building**. The regeneration covers about **67%** of the overall building sector turnover. An increase by **11%** from 2006 to 2015.

Dynamics of demography



Mitigation in the demography trend in the 2000s: from 2002 to 2011 an increase of population by 17% whereas from 2011 to today there is an increase by +1,2%.



1

VARIATION (2015)

> to REDUCTION of
SOIL CONSUMPTION

> to ACCELERATE the
REGENERATION PROCESSES

> to PRESERVE
RURAL AREAS

PUBLIC
NOTICE
(60 DAYS)



PARTECIPATORY
PROCEDURE



Expression
of Interest

ASSESSMENT CRITERIA

- Avoid urbanizable areas not adjacent to the urbanized territory
- Enhance public spaces and services
- Strengthen the mobility infrastructure system

ELEMENTS OF SUCCESS

● **the method:** public notice, expression of interest

● **-136 ha potentially urbanizable areas in agricultural territories**

● **-633 lodging**

● **-30% forecasts for new processing areas**

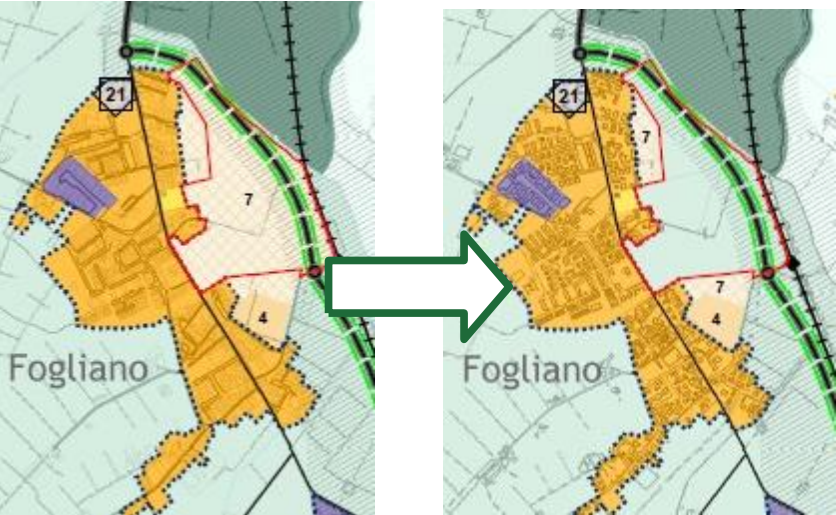
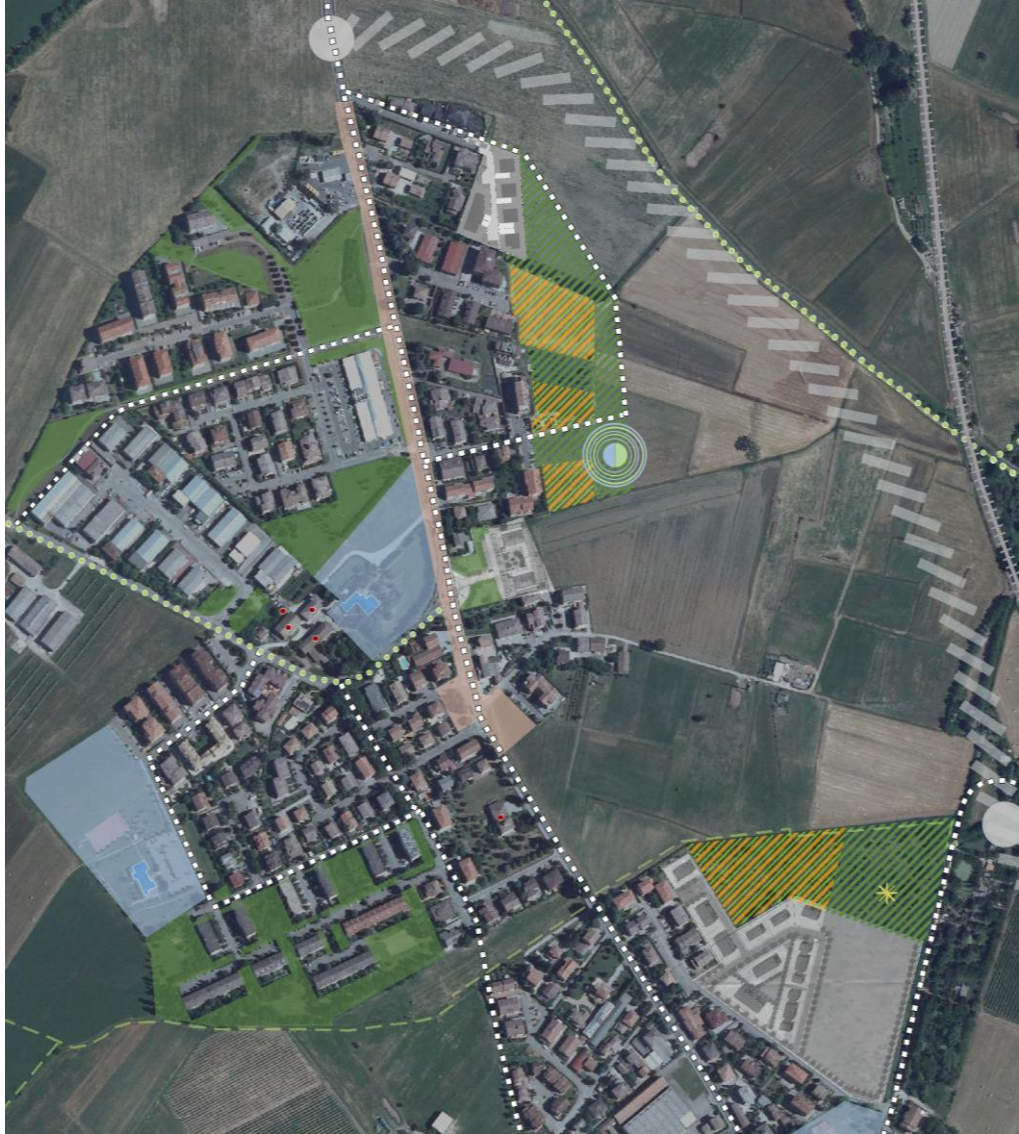
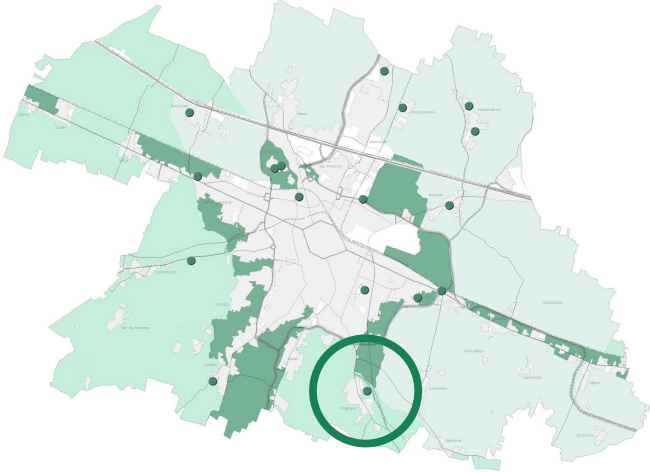
● **coordination with others urban planning and regulation tools**

Areas at high productive agricultural vocation

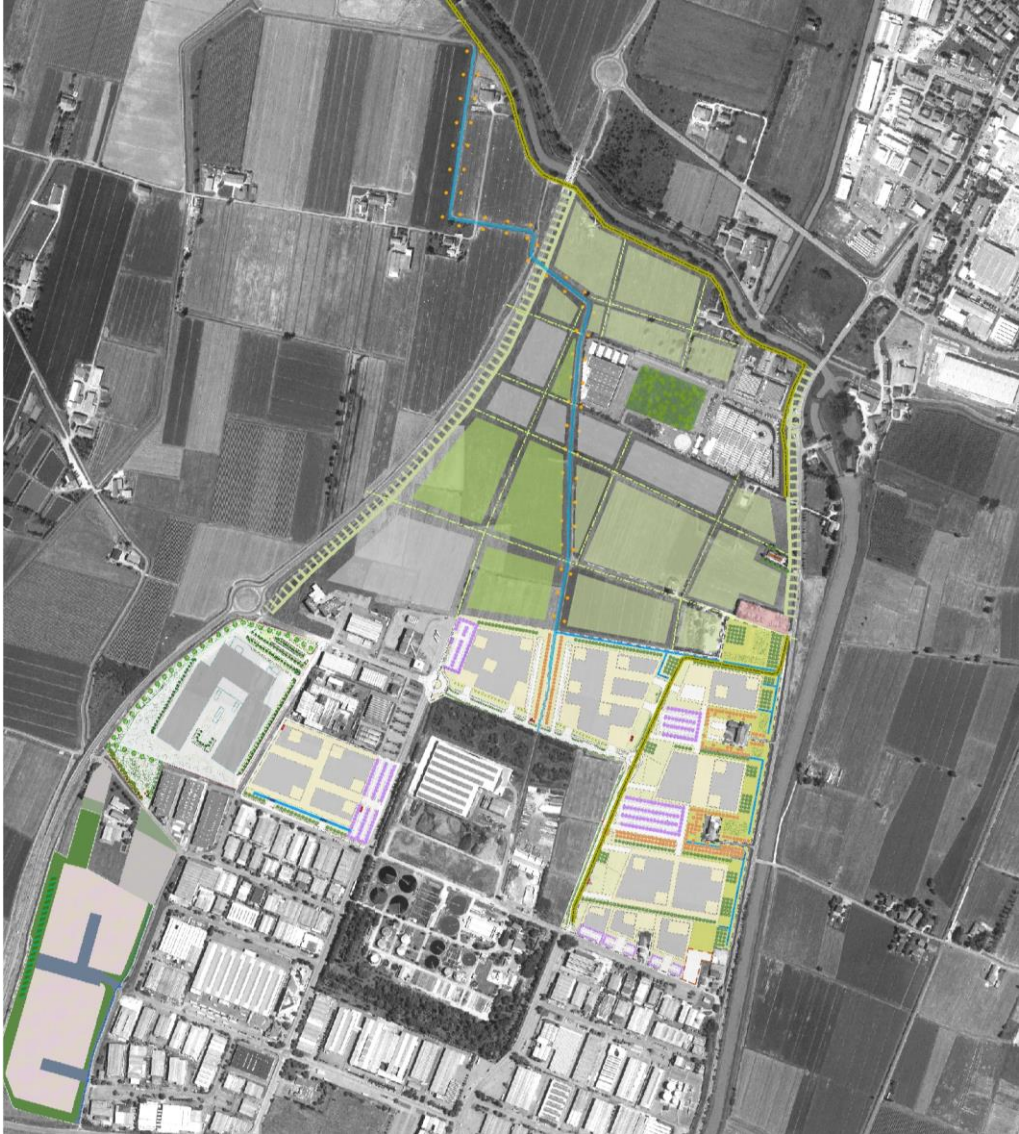
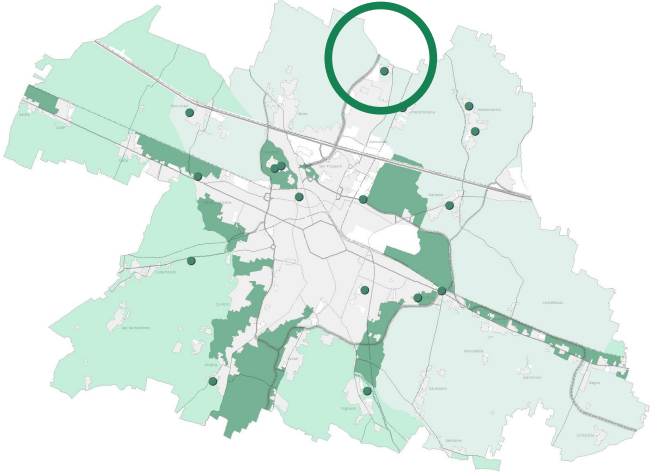
Agricultural areas with high landscape values

Peri-urban areas

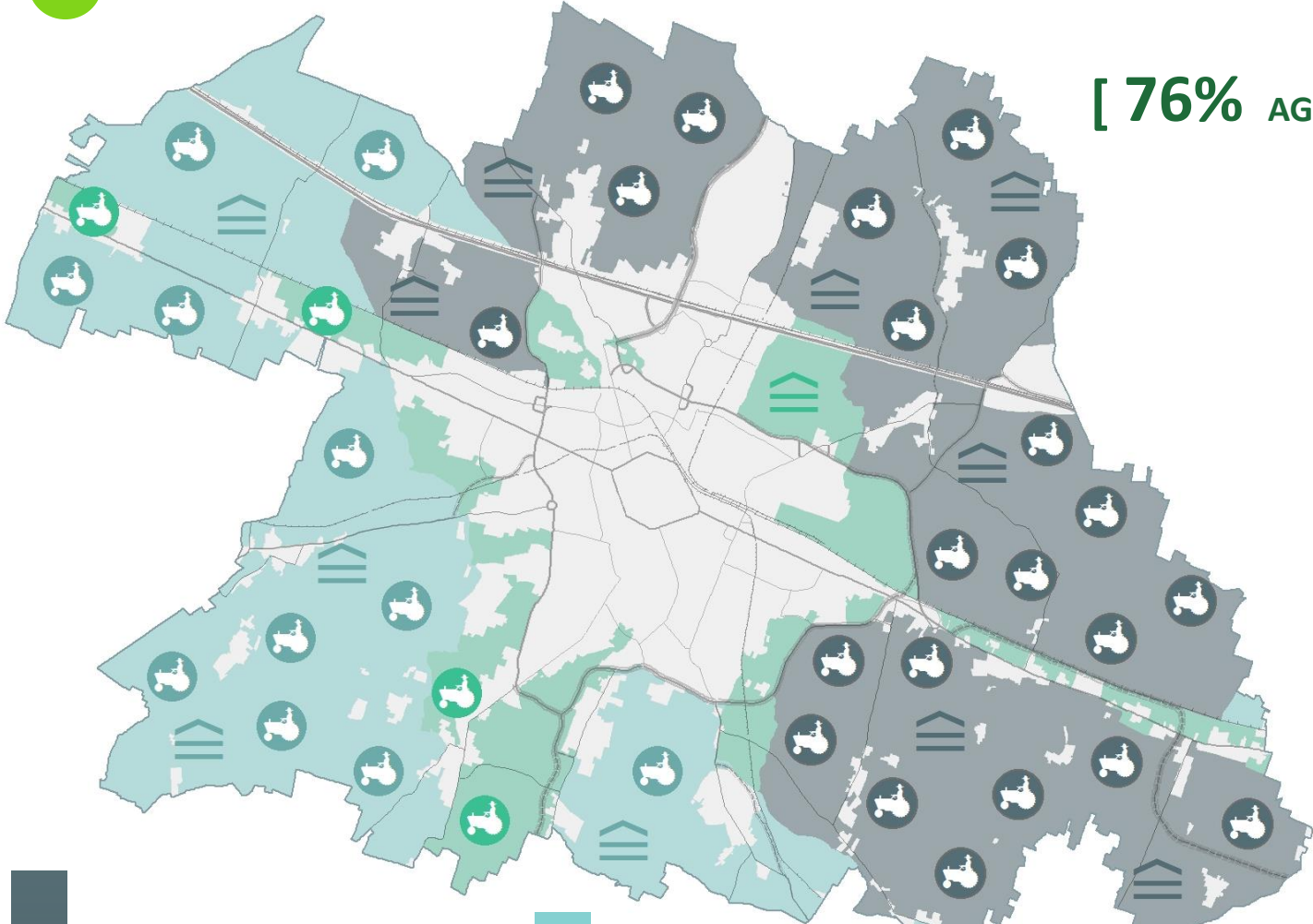
Example of potentially RESIDENTIAL urbanizable area subject to reclassification



Example of potentially PRODUCTIVE urbanizable area subject to reclassification



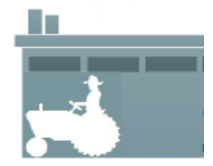
Characterization of the rural territory



[76% AGRICULTURAL TERRITORIES]



78% CULTIVATED TERRITORY



[1.000 +]
FARMS and LIVESTOCK

Areas at high productive agricultural vocation 51%

Agricultural areas with high landscape values 36%

Peri-urban areas 13%

Areas at high productive agricultural vocation



Agricultural areas with high landscape values



Peri-urban areas



2

VARIATION (2016)

> to PROMOTE WORK in AGRICULTURAL TERRITORIES

> to ENHANCE AGRICULTURE PERIURBAN and LANDSCAPE

PROCEDURE
SHARED WITH
STAKEHOLDER
ASSOCIATIONS



MEMORANDUM
OF
UNDERSTANDING



- *Emilia-Romagna Region*
- *Farmers associations*
- *Professional Associations*
- *Research institutes*
- *Faculty of Agriculture (University)*
- *Bonifica consortial*
- *Slow Food*

PROCEDURE
SHARED WITH
STAKEHOLDERS
ASSOCIATIONS



REGULATORY VARIANT TO THE BUILDING REGULATION

new definitions

NUOVE DEFINIZIONI

subjects

SOGGETTI AVENTI TITOLO

sales and production

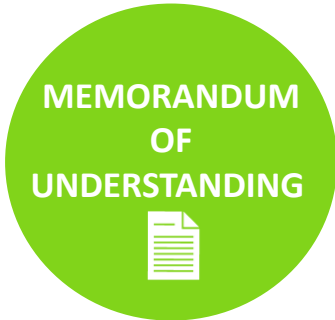
VENDITA E PRODUZIONE

compensatory measures

MISURE COMPENSATIVE

ELEMENTS OF SUCCESS

- **Method:** sharing and dialogue with local stakeholders
- **Targeted rules** according to vocation of the area and dimension of the farms
- Inclusion of **actions for compatibility between primary production and demand for landscape-environmental quality (multifunctionality)**
- Inclusion of **environmental mitigation and landscape enhancement actions**





8 luglio 2015

Protocollo a favore dei territori agricoli

A pochi giorni dall'avvio, da parte della giunta comunale di Reggio Emilia, del percorso per l'approvazione della Variante in riduzione delle previsioni di espansione in territorio agricolo, è stato presentato e sottoscritto – nell'anno dell'Expo 'Nutrire il pianeta. Energia per la vita', dedicata ad ambiente, agricoltura e alimentazione – un altro atto importante, e collegato strategicamente al precedente, in tema di agricoltura in territorio periurbano: il **Protocollo per la promozione di progetti e azioni finalizzati a tutelare, sostenere, attivare il lavoro in territorio agricolo.**

PREMIO URBANISTICA
INFO VINCITORI EDIZIONI PRECEDENTI




ELEMENTS OF SUCCESS

- public-private partnership
 - **STAKEHOLDERS**

- identification of actions and tools
 - **10 ACTIONS**
 - **GOVERNANCE TOOLS**
 - **FINANCIAL TOOLS**

**2017 Urban Planning Award:
Municipality of Reggio Emilia, Winners Category "New ways of living and producing"**



December 2017 >
EMILIA-ROMAGNA REGION issued a new regional law
"Disciplina regionale sulla tutela e l'uso del territorio"

to reach a zero
balance land
consumption
within 2050

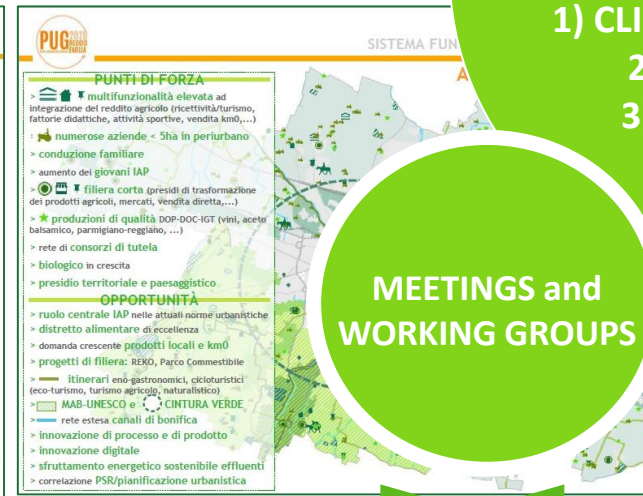
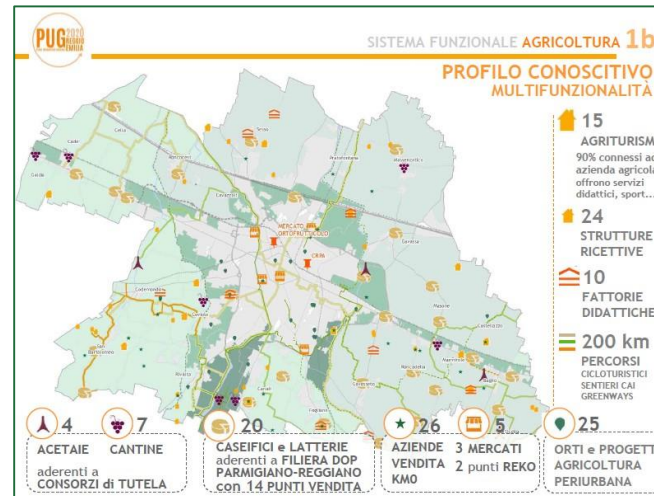
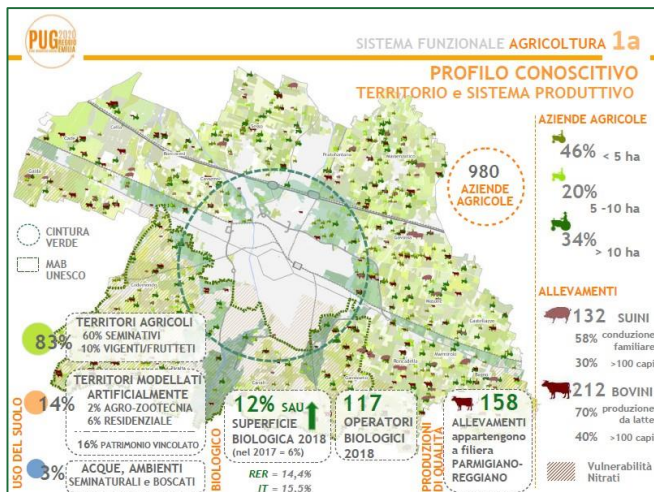
Current actions of the Municipality of Reggio Emilia

**3 Urban Planning
Tools (PSC-POC-RUE)**

REGIONAL LAW 2000

**General
Urban Plan (PUG)**

REGIONAL LAW 2017



- **Municipal services**
- **Environmental bodies, Trade Unions, Business Associations, Agricultural and Environmental Associations, Professional Associations, the Emilia-Romagna Region and the Province of Reggio Emilia**

100 meetings **6** working groups
+ meeting with Municipal Services

January - November 2020

**COGNITIVE
DIAGNOSTIC
FRAMEWORK**

**DIAGNOSTIC
SYNTHESIS**

**INDICATORS
(AGENDA
2030)**



DECEMBER

2 GOALS

3 CHALLENGES

MARCH 2021

**STRATEGIC
STRUCTURE
REGULATION**

PRESENTATION TO THE CITY

REGGIO EMILIA, COME TI IMMAGINI?

"Reggio Emilia, how do you imagine yourself?"

ON-LINE SURVEY



Il Comune di Reggio Emilia sta pensando al futuro della città: dai bisogni dei quartieri al benessere delle persone, dalla riqualificazione degli spazi pubblici alle grandi sfide urbane, ambientali, sociali ed economiche.
Gli esiti del presente questionario saranno assunti come importante contributo nella definizione delle politiche strategiche del PUG, il Piano Urbanistico Generale della città di prossima adozione.
Il questionario è anonimo, bastano 15 minuti.

GOALS

- 1 | Sustainability
- 2 | from Farm to Fork
- 3 | Recovery abandoned/ruined rural buildings
- 4 | Peri-urban agriculture
- 5 | Multifunctionality
- 6 | Centrality of the farmer

INDICATORS

- > SUSTAINABILITY
 - > % BIOLOGICAL SURFACE **12% >> 25%**
 - > % QUALITATIVE LIVESTOCK **41% >> 55%**
 - > % FERTILIZERS **>> -30%**
- >from FARM to FORK
 - > % ECOLOGICAL NETWORK **7% >> 10%**
- > ABANDONED/RUINED RURAL BUILDINGS
 - > % RECOVERY LODGING/YEAR **> 2%**
- > PERI-URBAN AGRICULTURE
 - > % FARMS WITH SALE **3% > 9%**
 - > mq URBAN HORTICULTURE/INHAB. **0,18 mq/inhab.**
- > MULTIFUNCIONALITY
 - > n. AGRITURISMS **2% > +25%**

MULTIFUNCTIONALITY

SUSTAINABILITY

LANDSCAPE

1 VARIATION
to REDUCTION
OF SOIL CONSUMPTION

2 VARIATION
to PROMOTE
RURAL TERRITORY



3 NEW PLAN

WHAT HAVE WE LEARNED?

WHAT ARE THE FUNDAMENTAL ASPECTS OF THE PLANNING PROCESS?

- Deep knowledge of the territory > to monitor data and assessment evaluate laws and rules and their coherence to goals established
- Defining a detailed law to set up actors, uses, actions, supporting the local dimension and giving values to several vocations of the territory
- Sharing strategies among the several departments of the Municipality with the aim of designing an integrated and strategic vision of the territory
- Partnerships with local stakeholders (e.g. business and farmers associations) to design concrete action to address changing demands and needs



PROSPERA

Interreg Europe



European Union
European Regional
Development Fund

Thank you!



Project smedia