



Parco commestibile

Edible Park





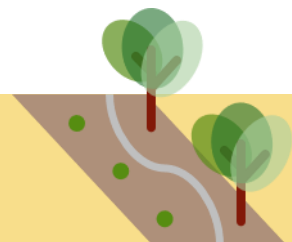
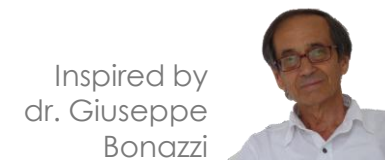
# REGGIO EMILIA

a rural vocation



- Multi-actors approach
- Innovative farm model
- Small but scalable ideas
- Site specific
- Peri-urban areas as an opportunity

## EDIBLE PARK



# TOWARD A SUSTAINABLE FOOD SYSTEM



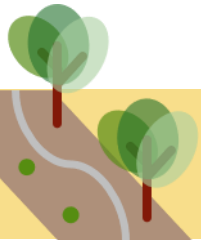
**What is the Edible Park**



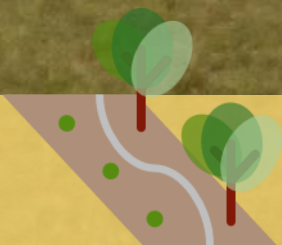
**Photos and video**



**Edible Park development**



PRESENTATION STRUCTURE



# LANDING AT THE PARK





via Tolstoj

agricoltura perurbana fra filari di gelsi

agricoltura perurbana fra filari di gelsi

COMMUNITY GARDEN + MULTIFUNCTIONAL FARM = EDIBLE PARK

**ENVIRONMENTAL**

organic farming

precision irrigation

mulberry trees to restore the traditional landscape and CO<sub>2</sub> sink

**SOCIAL**

disadvantaged workers

educational farm

involvement of local community

Product innovation

branding

**ECONOMIC**

direct sales/local GDO

A SUSTAINABLE PERI-URBAN FARM





ORGANIC FARMING







PRECISION IRRIGATION







## MULBERRY TREES





DISADVANTAGED WORKERS





INVOLVEMENT OF LOCAL COMMUNITY





## EDUCATIONAL FARM





PRODUCT INNOVATION...





...PREPARATION AND BRANDING







## PARCO COMMESTIBILE

l'agricoltura entra in città

parcocommestibile.org.it

PARCO COMMESTIBILE è un progetto di parco coltivato che si propone come cerniera tra città e campagna, dove alberi e colture orticole si integrano tra loro.

Il parco ha finalità produttive e paesaggistiche, ma anche ricreative e didattiche. Le attività del parco favoriscono relazioni di coesione sociale.

Gli ortaggi possono essere acquistati alla casetta del parco oppure prenotati attraverso il sito Web del progetto.

Ricostruire il paesaggio agrario tradizionale con filari di alberi di coltivazioni

Sviluppare nuove modalità di fornitura dei prodotti ai consumatori

Coltivare ortaggi e frutta a km 0 e far crescere relazioni sociali

Gratie Obiettive per la Regione "Cittadinanza e Agricoltura Perurbana" - Un'azienda agricola multi-funzionale per gli abitanti del vicino

Logo of Parco Commestibile and various partner logos including the European Union and Italian government.



DIRECT SALES





## PARCO COMMESTIBILE

Un'azienda agricola  
multifunzionale  
per gli ambiti periurbani



[www.parco.comestibile.it](http://www.parco.comestibile.it)

Il Gruppo Operativo per l'innovazione "Orticoltura e agroflessibilità periurbana" intende mettere a punto un modello di agricoltura multifunzionale che possa fungere da cornice tra la città e la campagna, ad alta sostenibilità ambientale, economica e sociale.

• Sostenibilità e produttività  
• Qualità e sicurezza  
• Servizi e attività ricreative  
• Valorizzazione del territorio periurbano

• Conoscenza e sviluppo  
• Formazione e ricerca  
• Servizi e attività ricreative



LOCAL SUPERMARKET

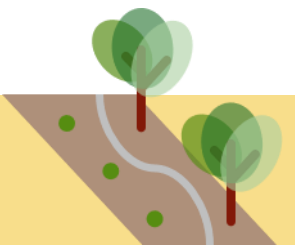
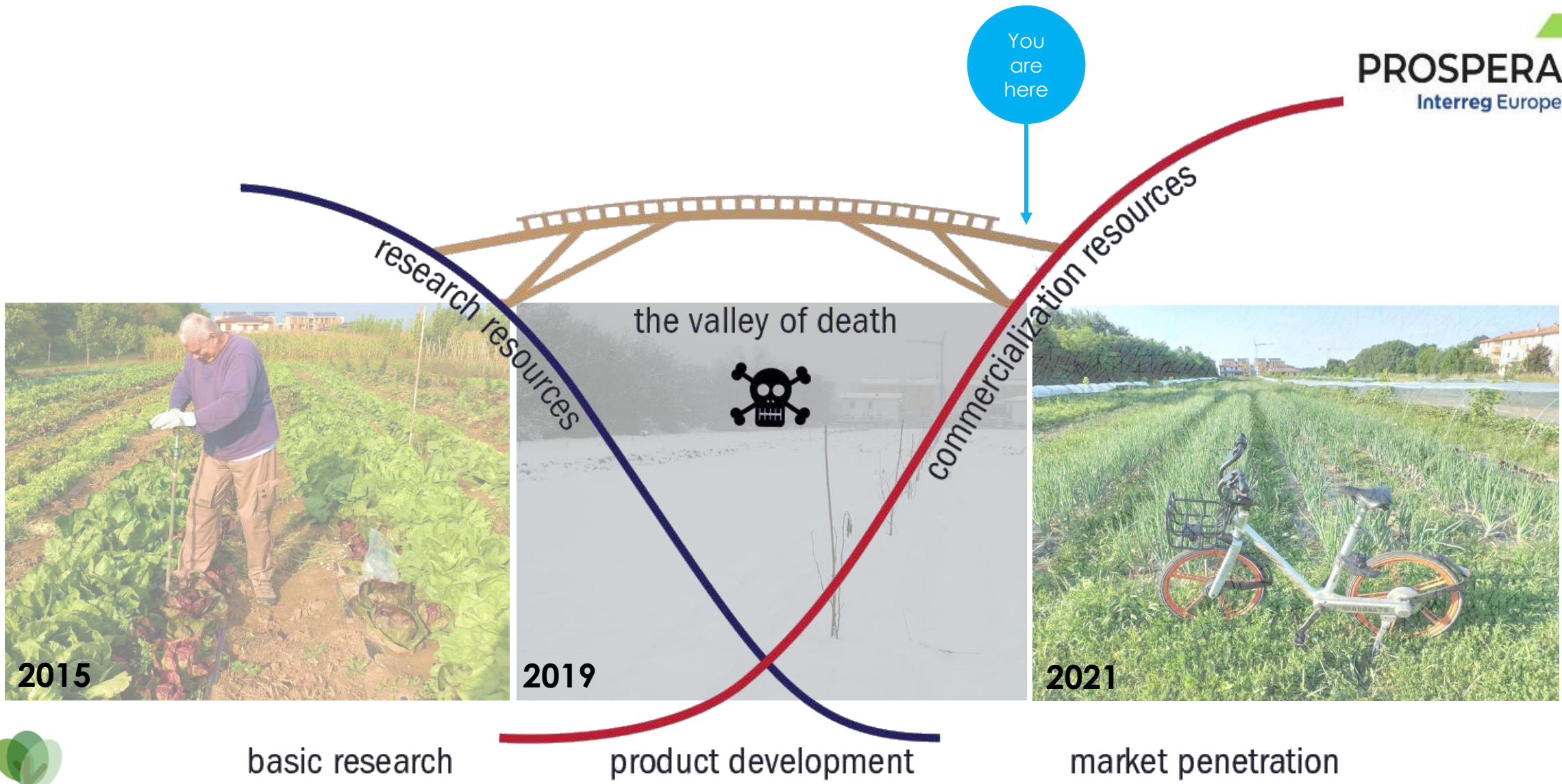




MIRCA SALSI, COOPERATIVA ORTOLANI



You are here



TIMELINE



# FACTS AND FIGURES

## 2015

- **Resolution n. 153** of the Municipal Council: *peri-urban agriculture strategy*

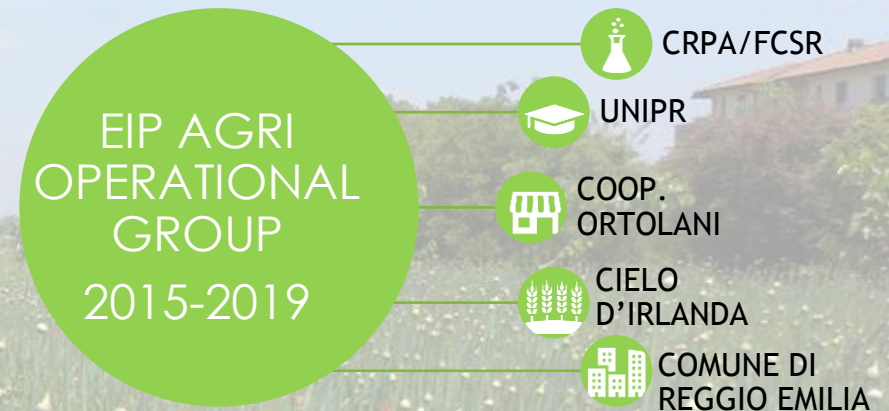
## 2016

- EIP AGRI Operational Groups **call for proposals** by Emilia-Romagna Region
- the Operational Group **“Edible Park” is approved**
- land preparation and planting of **mulberry trees**

## 2017-2019

- **Three years cultivation**
- **Trees management**
- Edible Park **presentations**
- **Sales experiences**
- Edible Park **soups & jams**

- OVERALL BUDGET: 272 k€ (70% financed by RDP)
- 5 PARTNERS



- BIODIVERSITY - many cultivated (and non-cultivated) plant and animal species on one hectare
- ENVIRONMENT – Nitrate reduction in both soil and soil water (less than in groundwater)
- LCA - Carbon footprint reduced by 4 times



RESEARCH AND PILOT DEVELOPMENT

an innovative eco-lo(gi)cal value chain



# MANAGING THE TRANSITION...

Need to find a new structure/governance

bureacracy vs seasons

THROUGH A  
PARTICIPATORY  
PROCESS!  
LIVING LAB

How to involve citizens?

How to identify the entity in charge of the park for the next years?

2019

- Local election
- Operational Group **ends**

2020

- **Living lab** starts (H2020 Liverur)
- **COVID**

LIVE  RUR

AD HOC  
CONTRACT  
2020



CRPA/FCSR



CIELO  
D'IRLANDA



COMUNE DI  
REGGIO E.

Public-private: a complex relationship

THE INNOVATION VALLEY OF THE DEATH



# LET IT GROW!

- the Living Lab brought a renewed interest in the initiative
- 3 applications received for the management of Edible Park 2.0
- The selected proposal foresees greater involvement of the local community

## 2021 - 2024

- **Call for interest** by Reggio Emilia Municipality
- **New partnership** established

NEW  
FRAMEWORK  
AGREEMENT  
2021-2024



COMUNE DI  
REGGIO EMILIA



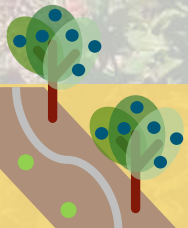
ORTO DI  
LUCIA



COOPERATIVA  
L'OVILE



CRPA



THE FUTURE

Wise governance for  
project viability



COMMUNITY

- «CANALI» COMMUNITY CENTRE
- Dissemination
- Monitoring and co-creation



REPLICABILITY

- Edible park STARTER PACK
- Scouting for NEW LOCATION



EDUCATION

- AGRICULTURAL HIGH SCHOOL «ZANELLI»
- Local varieties
- Students involvement
- OTHERS

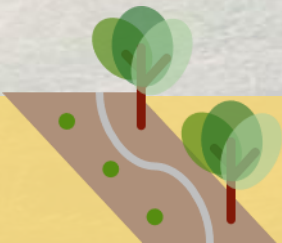


VIABILITY

- BRAND REGISTRATION
- CSA
- ETHIC FINANCE
- PUBLIC FUNDINGS



WHAT'S NEXT?





PLAN THE PROJECT **FOLLOW UP** IN ADVANCE...  
... BUT PREPARE TO FIND ALTERNATIVE SOLUTIONS

INSTITUTIONS/BUSINESSES ARE MADE OF **PEOPLE**: FIND THE RIGHT ONES  
(HAVING POWER IS GOOD, BUT REAL COMMITMENT IS GOLD)

**RESEARCHERS** SHOULD GET HANDS DIRTY (LITERALLY!)



LESSON LEARNT



A group of approximately 20-25 children and four adults are gathered in a garden. The children are mostly young, ranging from about 5 to 12 years old. They are standing on a dirt path, looking towards the adults. One adult, a woman in a striped shirt and a man in a blue and yellow vest, appear to be leading the group. The garden is lush with green plants, including tall stalks and some orange flowers. In the background, there are trees and a brick building with a red roof. A large yellow circle is overlaid on the left side of the image, containing the text "questions?".

questions?

A decorative graphic in the bottom left corner of the page, featuring a winding path with green trees and small green dots along its edge.

By Paolo Mantovi & Andrea Porcelluzzi (contacts [p.mantovi@crpa.it](mailto:p.mantovi@crpa.it))